

# Specification



## YU-KI BAN™ Alpha

Backing Material	Item No.	Size	Rolls/Box	Boxes/Carton
Polyolefin Film	3521	12mm×7m	24	20
	3522	25mm×7m	12	20
	3525	50mm×7m	6	10

## YU-KI BAN™ Non-Woven

Backing Material	Item No.	Size	Rolls/Box	Boxes/Carton
Non-Woven Cloth	3251	12mm×7m	24	20
	3252	25mm×7m	12	20
	3255	50mm×7m	6	10

# YU-KI BAN™ Surgical Tapes With STRATAGEL™ Technology

## Alpha/Non-Woven



### CAUTION

For the correct and safest use, be sure to read the "Handling Instructions" prior to use.  
This catalogue has been translated from Japanese.  
The contents of this catalogue may be revised without notice.

YU-KI BAN series are manufactured at Nitto Denko Tohoku Plant, which has been certified to be in conformity with the ISO 9001 and ISO 14001.

●Catalog content as of September 2008

### Manufactured by NITTO DENKO CORPORATION

Tokyo Branch : Medical Related Products Div.  
10TH FLOOR, EAST TOWER GATE CITY OHSAKI,  
SHINAGAWA TOKYO 141-0032, JAPAN  
TEL : +81-3-5740-2186

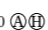



"PEOPLE AND SOLUTIONS YOU CAN RELY ON"

Free Call: 1800 280 133  
www.reliancemedical.com.au

Fax: 07 3261 6021

PO Box 2350 Chermside Centre QLD 4032  
Reliance Medical Pty Limited ABN 37 126 909 117

0804 F10   
0809 R00 

# Flexible Technology Company

# Above All, Gentle To The Skin

YU-KI BAN™ Alpha



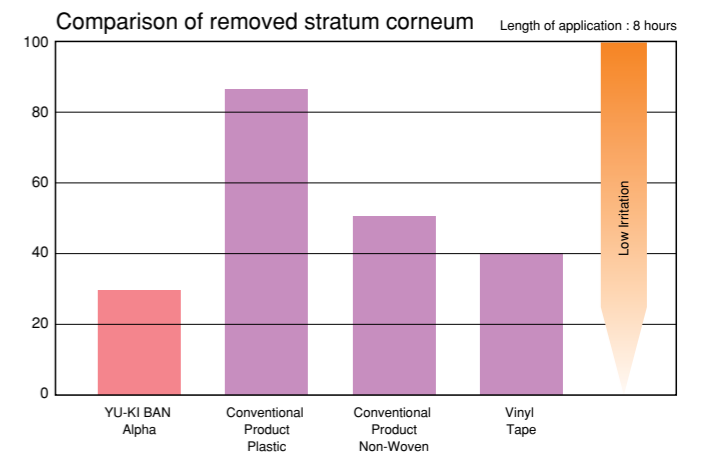
YU-KI BAN™ Non-Woven



YU-KI BAN Surgical Tapes employ the revolutionary STRATAGEL adhesive that is less damaging to the stratum corneum, protecting the skin from irritation and pain on removal. YU-KI BAN combines gentleness to patients' skin with excellent adhesion.

## Features

- 1. Low irritation tape**
- 2. Almost painless removal**  
Excellent adhesion with low removal of stratum corneum.
- 3. Allows repeated application**  
As little stratum corneum is removed, adhesive surface is not blocked, making retaping possible.
- 4. Latex free**

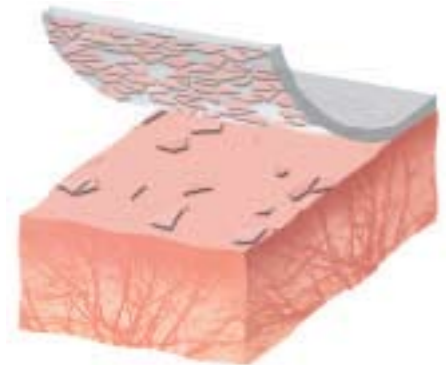


## Stratum Corneum Protection System

Our flexible lipo-gel adhesive conforms perfectly to the skin's rough surface, achieving high adhesion, while greatly reducing the damage to the stratum corneum when the tape is removed.

### Conventional Product

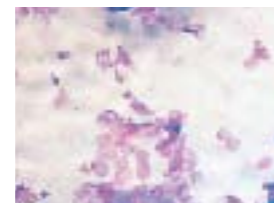
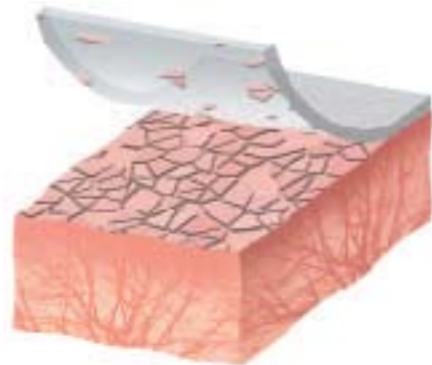
Skin Damage Caused by Removal of Stratum Corneum



Conventional Product A

### YU-KI BAN

Very Little Stratum Corneum is Removed



Less stratum corneum is visible on YU-KI BAN Alpha

The outermost layer of the skin, the stratum corneum, plays an important barrier function by preventing the infiltration of external stimulants into the epidermis; and preventing excess loss of fluids from inside the body. Therefore, excess removal of the stratum corneum due to the use of adhesive tapes can leave the skin susceptible to redness, irritation and other serious skin complaints.

Microscopic view of "adhesive surface after removal"

Area of Application : Human breast  
Length of Application : 6 hours  
Magnification : ×50

## YU-KI BAN™ Alpha

Excellent adhesion provides stable fixability

